

Central
School
of Ballet

Central School of Ballet
Venue Hire





Gable Studio Theatre

Central School of Ballet is a world-leading centre for professional dance training providing access to ballet and dance classes for all ages and abilities. Central's new premises, located minutes from Waterloo, Southwark and Blackfriars Stations, are available to hire.

A range of studio spaces, fully equipped studio theatre, meeting rooms, breakout areas and the well-appointed Tabor Hub Health and Wellbeing Suite are all available for hire. These facilities suit a wide range of events, from theatre and dance rehearsals through to corporate events, filming and for wellbeing.

Please contact info@csbschool.co.uk for more information

Studio 1: Gable Studio Theatre

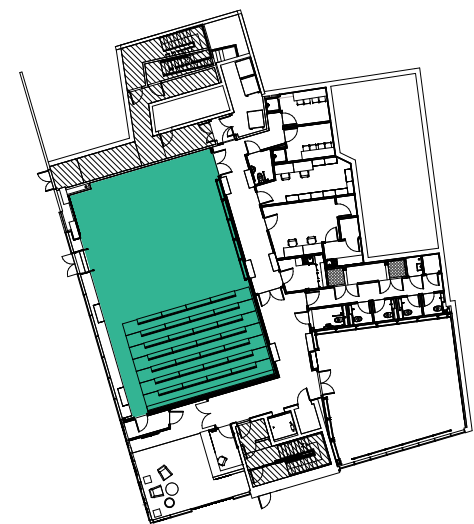
197.6m² Height:5.840m 14m x 9m

The studio theatre, located on the ground floor, has direct access from reception and can accommodate a maximum audience of 120.

Facilities include:

- Sprung dance floor
- Barre
- Mirrors
- Piano
- Tiered bench seating for 120, retractable giving full studio space
- L-Acoustics loudspeaker system and installed stage monitors, complete with 48-channel digital mixing console and radio microphones
- Installed lighting system comprising 26 moving lights
- Portable side light package (eight, each comprising one Source Four Profile and one Source Four Fresnel)
- 4.8m wide projection screen with HD projector
- Dark drape option
- Access to changing rooms
- Access to accessible and gender-neutral toilets
- Access to kitchen
- Direct street access for loading and unloading equipment
- Natural daylight from large floor to ceiling windows
- Wheelchair accessible

Level 0



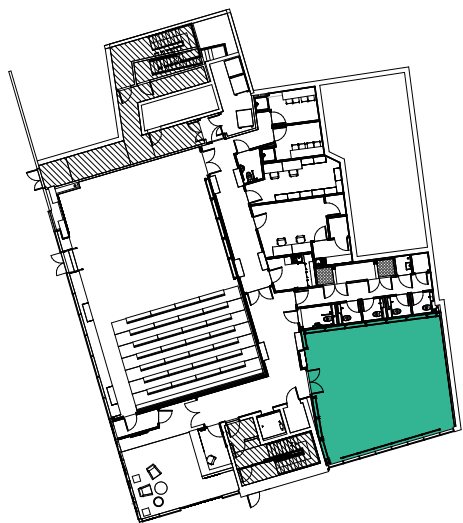
Studio 2: Gosman Studio

93.5m² Height: 5.540m 8m x 8m

The ground floor Gosman studio has direct access from reception. Facilities include:

- Sprung dance floor
- Barre
- Mirrors
- Piano
- L-Acoustics loudspeaker system (2x X12)
- Input via Bluetooth, RCA or 3.5mm
- Network audio inputs available by special arrangement
- 32A 3-phase power for visiting production
- Natural daylight from large floor to ceiling windows
- Wheelchair accessible

Level 0



Studio 3: Weston Studio

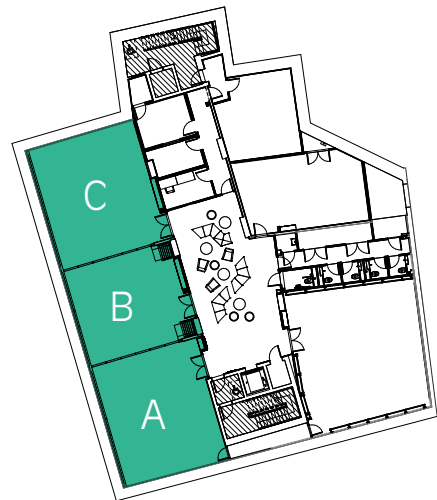
240m²(combined) Height: 5.540m
25m x 6m

- Studio A 81.2m² 8m x 6m
- Studio B 65.7m² 6m x 6m
- Studio C 81.2m² 8m x 6m

This double-height studio can be used as a single space or divided into 3 single units or a double studio and a single studio. The spaces are divided by a soundproofed partition system. The AV facilities can be configured to match the use of the space. Facilities include:

- Sprung dance floor
- Barre
- Mirrors
- Pianos
- L-Acoustics loudspeaker system (2x X12)
- Input via Bluetooth, RCA or 3.5mm
- Network audio inputs available by special arrangement
- 32A 3-phase power for visiting production
- Access to changing rooms on Level -1 via lift/stairs
- Access to accessible and gender-neutral toilets on this floor
- Access to breakout area
- Level -2 is wheelchair accessible via lift

Level -2



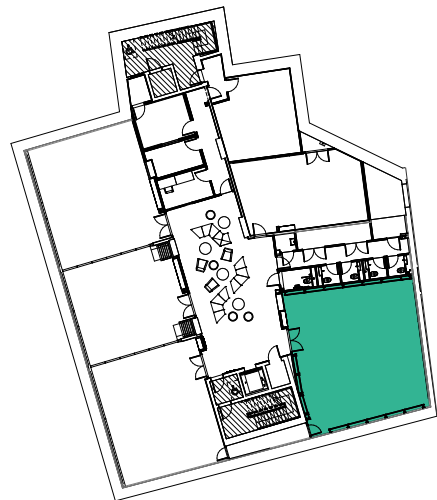
Studio 4: Fleet Studio

106.6m² Height: 5.540m 9m x 9m

A double height studio. Facilities include:

- Sprung dance floor
- Barre
- Mirrors
- Pianos
- L-Acoustics loudspeaker system (2x X12)
- Input via Bluetooth, RCA or 3.5mm
- Network audio inputs available by special arrangement
- 32A 3-phase power for visiting production
- Access to changing rooms on Level -1 via lift/stairs
- Access to accessible and gender-neutral toilets on this floor
- Access to breakout area
- Level -2 is wheelchair accessible via lift

Level -2



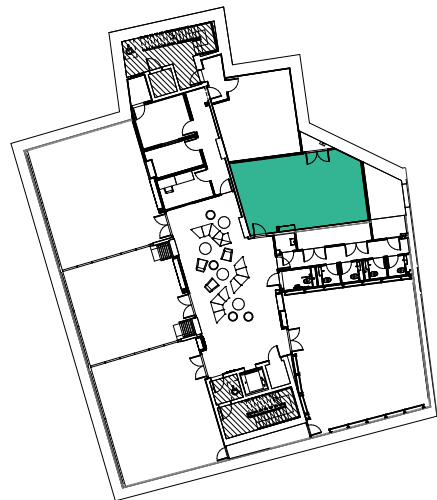
Studio 5: Headley Studio

54.0m² Height: 2.540m 4m x 8m

A single-height studio. Facilities include:

- Sprung dance floor
- Barre
- Mirrors
- Pianos
- L-Acoustics loudspeaker system (2x X8)
- Input via Bluetooth, RCA or 3.5mm
- Network audio inputs available by special arrangement
- 32A 3-phase power for visiting production
- Access to accessible and gender-neutral toilets
- Access to changing rooms on Level -1 via lift/stairs
- Access to breakout area
- Level -2 is wheelchair accessible via lift

Level -2



Meeting Room, Seminar Room, and Breakout Area

On Level 1 there is a meeting room and seminar room with a comfortable breakout area in-between. All rooms benefit from lots of natural daylight and are wheelchair accessible via the lift with accessible and gender-neutral toilets on the same level.

Meeting Room

- Seats 10 around large table (can be reconfigured)
- TV screen available
- Corner room with daylight on both sides

Seminar Room

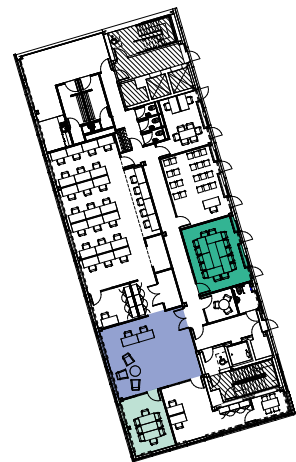
- Seats up to 20 theatre style
- Seats up to 15 conference style, or can be arranged as a horseshoe for discussion
- Wi-fi enabled A/V facilities and large screen
- Natural daylight

Breakout Area

- Direct access from meeting rooms
- Low tables
- Comfortable sofas and chairs
- Natural daylight



Level 1



Sieff Space and Green room

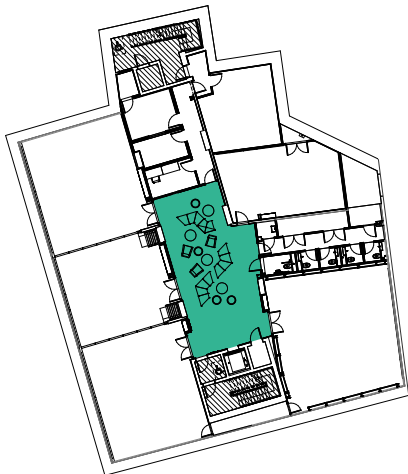
Sieff Space Level -2

This large breakout area in-between the Weston, Headley and Fleet Studios has stackable chairs, a large screen with A/V, and wi-fi connectivity. Level -2 is wheelchair accessible via lift.

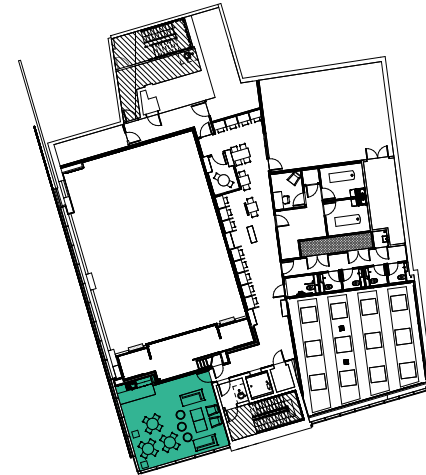
Green Room – Mezzanine

Designated for relaxation, the Green Room has large windows on two sides giving maximum natural light, overlooking a local park on one side and tennis courts on the other. There are high stools, bench style work areas, sofas, and low tables as well as a kitchen area with fridge, microwave and dishwasher. The Mezzanine is wheelchair accessible via lift.

Level -2



Mezzanine Level

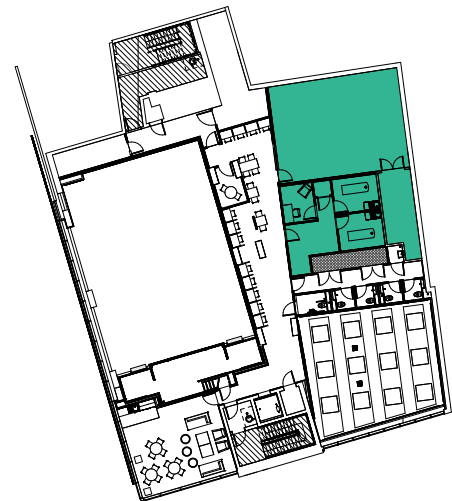


Tabor Hub Health and Wellbeing Suite

The Tabor Hub Health & Wellbeing Suite includes one main room with range of equipment designed for rehabilitation, Pilates (Reformer) and strength training with gym floor area and ballet barre plus two treatment rooms adjacent.

- Main Pilates and rehabilitation room
- Two treatment rooms
- Study area adjacent
- Access to accessible and gender-neutral toilets on this floor
- The Mezzanine is wheelchair accessible via lift.

Mezzanine Level



Catering and Further Facilities

Catering

There are two kitchens available each with a dishwasher and a microwave. These are suitable for use by approved outside caterers and for small scale hospitality. Outside caterers based in the local area can be recommended on request. All external suppliers need to be contracted separately and independently from Central.

Flooring

All studios have sprung dance floors, particularly suitable for ballet and general dance use. Protective flooring will allow more general use in these spaces, to be provided by arrangement.

Accessibility

A lift provides step free access to each floor and accessible, gender-neutral toilets are available on each floor.

Lockers and changing facilities – Level -1

Changing rooms, lockers, accessible and gender neutral toilets are all available on this floor. Level -1 is wheelchair accessible via lift.



Central School of Ballet

The Countess of Wessex Studios are named after Central School of Ballet's Royal Patron.

The studios are conveniently located close to major London transport hubs; less than a 10 minute walk from Waterloo and Blackfriars rail and tube stations, and only a 4 minute walk from Southwark tube. Numerous bus routes are equally accessible.

T: 020 7837 6332

E: info@csbschool.co.uk

W: centralschoolofballet.co.uk

A: The Countess of Wessex Studios,
21-22 Hatfields, Paris Garden, London SE1 8DJ

