

CHILD PROTECTION & SAFEGUARDING

Central School of Ballet

Child Protection and Safeguarding
Policies & Procedures

Debra Cougill

Created: 13 November 2017
Revised: 15 June 2021
Revision date: 15 December 2021

CHILD PROTECTION & SAFEGUARDING POLICIES AND PROCEDURES

CONTENTS

Key Contacts	1
Introduction	3
Policy Statement	3
Policy Aims	4
Safeguarding Roles & Responsibilities	7
• Responsibilities of Staff	7
• Responsibilities of the Board	7
• Students Assisting in Workshops	7
• Role of the Designated Safeguarding Lead	7
• Recruitment of Staff	8
Safeguarding Procedures	9
• Action if a Child Discloses Information	9
• Action If You Suspect Abuse Has Taken Place	11
• Flowchart – Appropriate Course of Action for Handling Safeguarding Concerns	12
Responding to Allegations or Suspicions	13
• Whistleblowing in Order to Protect the Welfare of a Child	13
• Internal Enquiries and Suspension	13
• Allegations of Previous Abuse	14
• Indicators of Abuse	14
Review and Support	15
• Support to Deal with the Aftermath of Abuse	15
• Supporting the Child / Vulnerable Adult	15
• Supporting Staff	15
• Supporting Parents and Carers	15
• Confidentiality	15
• Complaints Procedure	16
• Monitoring	16
Appendices	
• Appendix A – Code of Conduct for CSB Staff, Guest Tutors & Choreographers	17
• Appendix B – Code of Conduct for Visitors to CSB	19
• Appendix C – CSB Incident Recording Form	21
• Appendix D – Definitions & Indicators of Abuse & Neglect	23
• Appendix E – Specific Safeguarding Issues	25

KEY CONTACTS

Central School of Ballet

Executive Director:

Mark Osterfield

Tel: 020 7837 6332

Email: mark.osterfield@csbschool.co.uk

Designated Safeguarding Lead (DSL) and Prevent Single Point of Contact (SPOC):

Debra Cougill

Head of Widening Participation & Access

Tel: 020 7520 2066 (direct line)

Email: debra.cougill@csbschool.co.uk

Mobile Number available from Reception when no Deputy is available and during out of office hours

Deputy Safeguarding Officers:

Anna Brodrick

Head of Medical & Well-Being

Tel: 020 7923 5903 (Direct Line)

Email: anna.brodrick@csbschool.co.uk

Jo Hurst

Associate School Manager

Tel: 020 7923 5490

Email: jo.hurst@csbschool.co.uk

Nominated Board Member for Child Protection and Safeguarding:

Simon Cole

Email: simon@simoncole.net

External Contacts

Southwark Safeguarding Children Partnership

SSCP@southwark.gov.uk

Southwark Safeguarding Adults Board

SSAB@southwark.gov.uk

Multi-Agency Safeguarding Hub (MASH)

020 7525 1921 (weekday 9-5) or 020 7525 5000 (out of hours).

MASH@southwark.gov.uk

If you suspect a child is in immediate danger you should call the Police on 999.

Introduction

Central School of Ballet works with children, young people and vulnerable adults, delivering both higher education programmes at Foundation, BA and MA level for 16+ years, and dance training and short courses for 3-16 years. Classes aim to be educational and fun. This can only be achieved in an atmosphere of trust and respect. Central recognises that all children, young people and vulnerable adults involved in our education work have a right to protection.

Central has adopted the following Child Protection and Safeguarding Policy to ensure that the School is doing everything in their power to ensure the safety and protection of all those participating in its education work. Central also recognises its responsibilities to protect staff, students and volunteers against unfounded allegations of abuse.

For the purpose of this policy a child is defined as a person under 18 years, but the policy remains in place for all young people over 18 years who are in full time higher education at Central School of Ballet.

The term 'vulnerable adult' refers to a person aged 18 years or over who is, or may be in need of, community care or health care services by reasons of mental or other disability or illness and who may be unable to take care of themselves or protect themselves from harm or from being exploited.

Policy Statement

Central School of Ballet has a duty to safeguard from harm all children, young people and vulnerable adults involved in its education and outreach work. All children and young people have the right to protection. The school understands that some children and vulnerable adults, including those with specific learning differences and disabilities, may be particularly vulnerable to abuse. Central School of Ballet accept the responsibility to take reasonable and appropriate steps to ensure the safety and protection of these groups through adherence to these safeguarding guidelines.

Central's Child Protection and Safeguarding policy also includes preventing students and staff from being drawn into radicalisation or extremism and that any concerns should be referred to the DSL in the same way as all other safeguarding concerns.

Central believes that:

- The welfare of the child is paramount
- All participants in our training and education work, without exception, have the right to be safe and be protected from abuse
- All adults have a responsibility to safeguard and protect children

Policy Aims

The aim of Central School of Ballet's Child Protection & Safeguarding Policy is to promote good practice by:

- Establishing and maintaining an environment where children feel secure, are encouraged to talk and are listened to.
- Ensuring children know that there are adults in the school whom they can approach if they are worried or have concerns.
- Employing safer recruitment procedures when checking the suitability of all staff and volunteers who work with children.
- Ensure all staff and visitors working unaccompanied around the building have read, understood and signed the school's Code of Conduct and Safeguarding Procedures.
- Allowing all staff to make informed and confident responses to specific safeguarding issues.
- Ensure all suspicions and allegations of abuse are taken seriously and are responded to swiftly and appropriately.
- Ensure all staff involved in the School's education work and employed by Central will report any concerns to the appropriate Designated Safeguarding Lead.
- Ensure that confidential and accurate recording of all safeguarding concerns are maintained and securely stored.

Please note: Central staff are not specifically trained or qualified to deal with situations of abuse or have the power to decide if abuse has occurred. However, appropriate action will be taken to notify the relevant authorities to any suspected or actual cases of abuse.

The term 'staff' applies to full time staff, freelance tutors and artists, support staff, teaching assistants, guest choreographers, volunteers and all visitors working at Central who are unaccompanied around the building.

Central's Child Protection & Safeguarding Policy and Procedures will be widely promoted and are mandatory for everyone involved at and for the School. Failure to comply will be addressed immediately and may ultimately result in dismissal/exclusion from the organisation.

Guidance & Legal Framework

This policy has been written to comply with the following legislation, regulations and statutory guidance:

- DfE *Keeping Children Safe in Education* (September 2018)
- DfE *Working Together to Safeguard Children* (2018)
- DfE *Guidance for Schools on Dealing with Allegations against Staff Members*
- DfE *What to Do if You're Worried a Child is Being Abused* (2015)
- London Safeguarding Children Board: *London Child Protection Procedures* (2018)

Associated Policies

This document should be read in conjunction with the following Central School of Ballet's staff policies including:

- Code of Conduct and Safeguarding Procedures
- Safer Recruitment Policy
- Health & Safety Policy
- Appropriate Contact in Dance Policy
- Equal Opportunities Policy
- Prevent: Policy to Support the Prevention of Extremism and Radicalisation
- Social Media Policy
- Acceptable Use Policy for IT Systems
- Bullying & Harassment Policy
- Whistleblowing Policy

SAFEGUARDING ROLES & RESPONSIBILITIES

Responsibilities of Staff

All permanent staff and regular freelance staff must undergo Child Protection and Safeguarding Training and ensure that they:

- Recognise their responsibilities and report any concerns about suspected poor practice or possible abuse
- Respond to concerns expressed by a child, young person or adult
- Work safely and effectively with children

Central will support staff with training regarding safeguarding and make sure each member of staff is aware of the issues surrounding Child Protection.

Refresher courses for Child Protection and Safeguarding will be arranged annually including training in Prevent and in Appropriate Contact in Dance.

Responsibilities of the Board

Governors are responsible for reading and understanding the provisions of this policy and ensuring that the school complies with its responsibilities and duties under safeguarding legislation and that sufficient measures are in place.

The Board of Governors will appoint a Governor responsible for Child Protection and Safeguarding.

Students Assisting in Workshops

Occasionally Senior School students will assist in the delivery of workshops both internally (working with under 16s) and externally in primary and secondary schools. Students will never have unsupervised contact with children and will be given appropriate workshop leader training including safeguarding training in advance of such occasions.

When working in organisations externally, Central will ensure that an adult from the external organisation is present throughout the workshop.

Role of the Designated Safeguarding Lead (DSL)

The role of the Designated Safeguarding Lead (DSL) at Central School of Ballet is to take lead responsibility for safeguarding and child protection within the school. This involves providing advice and support to other staff and to be available during school hours for staff to discuss safeguarding concerns.

The Designated Safeguarding Lead and the two Deputies will liaise with, and manage referrals to, relevant agencies such as MASH, LADO, Channel Panel (ref: Prevent Policy), Police and the Disclosure and Barring Service.

The DSL will keep the Executive Director of the School and the Board of Governors informed of on-going safeguarding and child protection issues and enquiries. The DSL will provide advice and guidance for staff on safeguarding and child protection issues and ensure that the school's policies and procedures are up to date, reviewed annually and implemented.

Recruitment of Staff

Central School of Ballet recognises that anyone may have the potential to abuse children in some way and that all reasonable steps must be taken to ensure unsuitable people are prevented from working with children.

Central requires that:

- All staff (both permanent and those freelancers who regularly work at Central on a weekly basis) will only be employed if they agree to and complete the disclosure procedure recommended by the Disclosure & Barring Service (according to the level appropriate for the candidate's role).
- Two references are given from previous employers confirming their suitability to work with young people.
- All new permanent staff complete an application form. The application form will elicit information about an applicant's past and a self-disclosure about any criminal record.
- All new staff and freelance staff working at Central on an irregular basis will complete a New Starter Form and show proof of identity. The identity of all new staff is verified from their passport or other photographic ID and proof of address must be provided. The applicant's right to work in the UK must be evidenced through documentation. Only original documents are accepted.
- All staff including visiting tutors and occasional guest staff including adults engaged in Central's outreach programmes must have read, understood and agree to adhere to the school's Code of Conduct and Safeguarding Procedures, **(APPENDIX A and B)** the Child Protection & Safeguarding Policy and Prevent: Policy to Support the Prevention of Extremism and Radicalisation

Full details of the School's safer staffing procedures can be found in the School's Safer Recruitment Policy & Procedures.

SAFEGUARDING PROCEDURES

It is not the responsibility of anyone working at Central, in a paid or unpaid capacity, to decide whether or not child abuse has taken place.

However, there is a responsibility to act on any concerns through contact with the appropriate authorities.

Central will assure all staff that it will fully support and protect anyone, who in good faith reports his or her concerns that anyone is, or may be, abusing a child. Staff will receive training to be alert to potential signs and indicators and take appropriate action where necessary.

Action if a Child Discloses Information

When a child or young person makes a disclosure to a member of staff, this will be recorded and given to the school's Designated Safeguarding Lead who will determine the appropriate course of action. The documentation will be stored securely and remain confidential. Any concerns about a child or young person will be recorded regardless of whether or not it will be ultimately passed on to the statutory authorities.

If a child or young person talks about possible abuse, the member of staff **should**:

- Respond in a calm manner.
- Remember that the child is likely to be frightened or anxious.
- Tell the child that he or she was right to tell someone and is not to blame.
- Listen carefully and take what the child says seriously. Allow the child to speak freely.
- Recognise the inherent difficulties interpreting what is said by young children.
- Ask no more questions than are necessary to ensure they are clear enough about what has happened to pass the child's concerns on. The child may also be asked to recount their story to social services or the police. However, the child must not be prevented from recalling events.
- Reassure the child but do not promise confidentiality. It should be explained that the child will have to speak to someone else who can help.
- Make a full written record of what has been said, heard and/or seen as soon as possible.
- Remember that young or disabled children may not be able to express themselves verbally. Communication differences may mean that it is hard for them to complain or be understood. Sometimes abuse of disabled children has gone unrecognised because behavioural clues were interpreted as part of their disability.
- Explain what will happen next and who has to be told.

Do find an appropriate early opportunity to explain that anything the child tells you may need to be shared with others.

Remember that if a child makes a disclosure to you:

- Do not panic
- Never make promises or agree to keep secrets for any student who is disclosing information
- Do not allow your shock or distaste to show
- Never probe for more information than is offered
- Do not ask the child to write down his / her account
- Never take photographs of marks / bruises
- Do not attempt to examine the child or remove any of their clothing
- Do not speculate or make assumptions about what has happened
- Do not make negative comments about the alleged abuser
- Never approach the alleged abuser

If a child makes a disclosure please ensure a detailed record of what has been said is made. Please see **Appendix C** for the Central School of Ballet Incident Recording Form Template which identifies what information is required. If you are unable to use the template form then please follow the guidelines below on what information you must try to collect. **Remember that all records need to be factual, objective, dated and timed.**

- The young person's name, age and date of birth
- Please try to obtain the following from the young person: The parent / carer name, address, phone number and email address
- Whether or not the person making the report is expressing their own concerns or those of someone else
- The nature of the allegation. Include dates, times and other relevant information
- Make a clear distinction between what is fact, opinion or hearsay
- A description of any visible bruising or other injuries. Also any indirect signs, such as behavioural changes
- Details of witnesses to the incidents
- The young person's account, if it can be given, of what has happened and how any bruising or other injuries occurred if applicable. Record the information using the child's own words.
- Have the parents been contacted? If so what has been said?
- Has anyone else been consulted? If so record details
- If the young person was not the person who reported the incident, has he / she been spoken to? If so what was said?
- Has anyone been alleged to be the abuser? Record details

This form should then be forwarded as soon as possible (**certainly within the next 24 hours**) to the Designated Safeguarding Lead however if there is a risk of immediate harm to a child the police should be informed.

Please note: safeguarding and child protection referrals should be made to the local authority where the child ordinarily lives. In the first instance, Central School of Ballet will contact the MASH team of the borough where Central is located, currently Southwark.

Action If You Suspect Abuse Has Taken Place

Any suspicion that a child has been abused by a member of staff should be reported immediately to the Designated Safeguarding Lead (DSL), who will inform the Executive Director and the Nominated Board Member responsible for Safeguarding.

Please see the diagram over the page for details on the course of action should you suspect abuse has taken place or have suspicions of abuse. The flow chart indicates what steps are taken and in which order.

If the Designated Safeguarding Lead is the subject of the suspicion/allegation, the report must be made to the Executive Director of Central School of Ballet who will refer the matter to the LADO Contact.

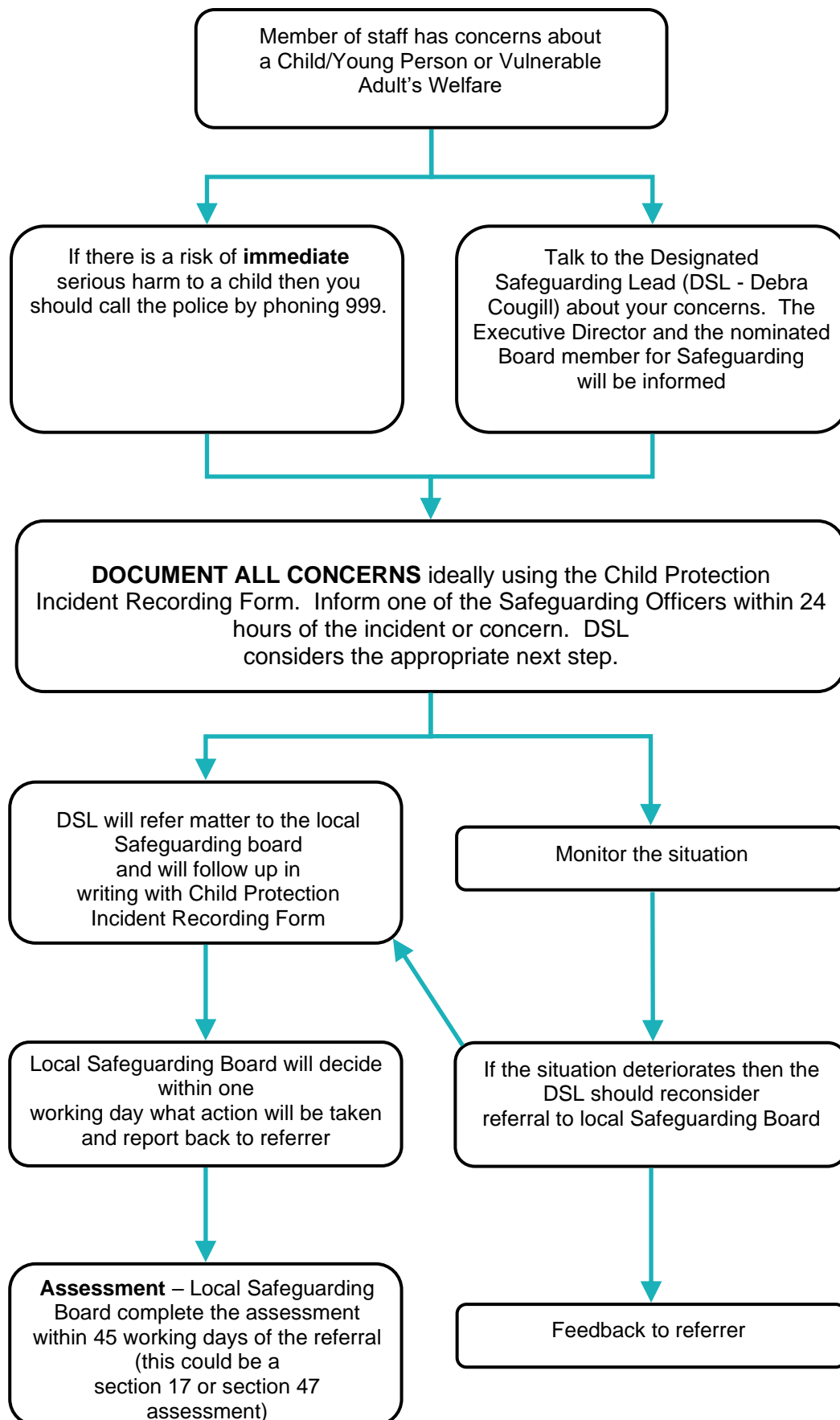
If the allegation is about the Executive Director, the DSL will take the matter to the Chair of the Board without informing the Executive Director.

Any suspicion that a child has been abused by someone not working at Central School of Ballet, for example, a parent, carer, another child, an external agency or service provider, then please report your concerns to the DSL and complete the Incident Reporting Form.

The parents or carers of the child will be contacted as soon as possible following advice from the LADO.

Please note: If the allegation is about poor practice by the Designated Safeguarding Lead, or if the matter has been handled inadequately and concerns remain, it should be reported to the Executive Director and the Designated Board Member for Safeguarding at Central who will decide how to deal with the allegation and whether or not to initiate disciplinary proceedings.

Appropriate Course of Action for Handling Safeguarding Concerns



RESPONDING TO ALLEGATIONS OR SUSPICIONS

Whistleblowing in Order to Protect the Welfare of a Child

Central School of Ballet is committed to the highest standards of openness, probity and accountability. It seeks to conduct its affairs in a responsible manner, taking into account the requirements of the Conservatoire for Dance and Drama, the funding bodies, and the Nolan principles of standards in public life.

If you have concerns about the behaviour of a member of staff or other volunteer within Central School of Ballet, then you must report your concerns to either the Designated Safeguarding Lead or one of the Safeguarding Officers.

All staff and volunteers have a legal duty to raise concerns where they feel individuals, or the school itself, is failing to safeguard and promote the welfare of children. Please refer to Central's Whistleblowing policy available to staff on the 'S' drive listed policies or request a copy from the Director of Finance and Operations.

If an individual does not feel able to raise their concerns with their line manager, in the first instance, or employer, staff can contact Southwark's lead officers for child protection and safeguarding. The contact details are on page 1.

Internal Enquiries and Suspension

In the event that an allegation is made against a member of staff, student or volunteer, Central School of Ballet's Designated Safeguarding Lead will act as the school's representative for the purposes of the allegation procedures and will immediately contact the LADO before any investigation takes place. The LADO will advise on the appropriate course of action to ensure the safety of the child in question and any other child who may be at risk.

The Designated Safeguarding Lead will consult with the Executive Director of Central School who will inform the Chair of the Board. Together they will make an immediate decision about whether any member of staff accused of abuse should be temporarily suspended pending further police and social services inquiries and following the advice of the LADO.

This may be a difficult decision: particularly where there is insufficient evidence to uphold any action by the police. In such cases, Central's Executive Director and Board of Governors must reach a decision based upon the available information which could suggest that on a balance of probability, it is more likely than not that the allegation is true. The welfare of the child will remain of paramount importance throughout.

The individual who the allegation is against may be informed of the allegation, on the advice of the local safeguarding authority, and may be removed from contact with children and vulnerable adults in line with the appropriate disciplinary process (staff

or student). Any internal disciplinary action arising from an investigation will be handled in accordance with the relevant disciplinary process (staff or student). Independent of the findings of social services or police inquiries, the School will investigate all individual cases to determine the appropriate action to be taken.

Staff must understand their own vulnerability when working with children and therefore follow Central's Code of Conduct.

Further information regarding disciplinary procedures can be found in the Staff or Student Handbook.

Central School of Ballet is responsible for reporting to the Disclosure and Barring Service within 4-6 weeks of leaving a school, a person who is no longer deemed suitable to work with children

Allegations of Previous Abuse

Allegations of abuse may be made some time after the event (e.g. by an adult who was abused as a child, or by a member of staff who is still currently working with children).

Where such an allegation is made, Central should follow the procedures as detailed above and report the matter to social services or the police. This is because other children may be at risk from this person.

Further information regarding Central's recruitment procedures can be found in the Safer Recruitment Policy.

Indicators of Abuse

Please refer to **Appendix D** for a list of definitions and indicators that abuse may be taking place.

We ask all staff to familiarise themselves with the indicators so that they may recognise the signs when abuse may be taking place.

REVIEW AND SUPPORT

Support to Deal with the Aftermath of Abuse

Consideration will be given to the support that children, parents and members of staff may require. Use of helplines, support groups and open meetings will maintain an open culture and help deal with the process.

The British Association for Counselling Executive Directory can be found at <http://www.itsgoodtotalk.org.uk/> which has a search facility for counselling options.

Consideration will be given to what kind of support may be appropriate for the alleged perpetrator.

Supporting the Child / Vulnerable Adult

In cases where the child or vulnerable adult may have suffered significant harm, or there may be a criminal prosecution, advice will be sought from the local safeguarding board and the police, if appropriate, as to what support the child / vulnerable adult may need.

Supporting Staff

- Employers have a duty of care towards employees
- We will provide effective support to anyone facing an allegation
- We will provide the employee with a named contact if suspended
- Suspension would be carefully considered
- All allegations will be dealt with quickly and fairly to ensure protection of child and support person at centre of allegation

Supporting Parents and Carers

Parents or carers of children involved in disclosing information will be told of any allegation if they are not already aware. However, parents and carers must understand that in certain circumstances of alleged abuse, there may be a need to contact other agencies without first notifying the parent / carer. This decision will be made in consultation with the Local Authority Designated Officer.

Parents / carers will be kept informed about progress of the allegation and told the outcome of an investigation and any disciplinary process.

Confidentiality

Every effort should be made to ensure that confidentiality is maintained for all concerned. Information should be handled and disseminated on a need to

know basis only, this includes:

- The Designated Safeguarding Lead
- The parents of the person who is alleged to have been abused
- The person making the allegation
- Social Services/Police
- The alleged abuser (and parents if the alleged abuser is a child)
- The person who the disclosure was made to

The School will seek local authority advice on who should approach the alleged abuser. The matter will not be dealt with by a lone staff member but in consultation with the appropriate people.

Information will be stored in a secure place with limited access to designated people, in line with data protection laws. All information recorded needs to be accurate, regularly updated, relevant and secure.

Complaints Procedure

Any person wishing to complain about an issue dealt with by the Central School of Ballet Child Protection and Safeguarding Policy should follow the school's Complaints Procedure. This policy can be found in the school's staff handbook and is available on request from the school.

Monitoring

The Safeguarding Committee will meet termly to:

- Review any activity relating to safeguarding and address any issues arising.
- Review and plan training undertaken or required by staff, volunteers and governors in relation to safeguarding.
- Review and update safeguarding policies and procedures.

The Safeguarding Committee will include:

- The Designated Safeguarding Lead
- The Deputy Safeguarding Leads
- The Executive Director
- The Nominated Board Member for Safeguarding
- The Director of Operations and Finance (when an incident involves a member of staff)

Central School of Ballet

Code of Conduct and Safeguarding Procedures for all CSB Staff, Guest Tutors and Choreographers

This document should be read in conjunction with Central School of Ballet's Safeguarding Policy and Procedures

Central School of Ballet works with children, young people and vulnerable adults delivering programmes of education and classes. Teachers and other adults working with children and young people have a duty to safeguard them from harm and promote their welfare. Central recognises that all children, young people and vulnerable adults involved in the work of the school have a right to protection and feel safe at all times. For the purpose of this policy a child is defined as a person under 18 and includes young people over 18 who are in full time education.

We ask all staff, visiting tutors and guest choreographers to familiarise themselves with our Safeguarding Policy and comply with the clear guidelines as written below. Please note that failure to follow the school's safeguarding policy may result in formal disciplinary action and termination of employment.

Personal and Professional Conduct

Tutors and guest artists are expected to demonstrate consistently high standards of personal and professional conduct. All students, irrespective of culture, disability, gender, age, language, racial origin, religious belief and/or sexual identity should be treated fairly and with dignity and mutual respect. We expect all staff to demonstrate tolerance of other faiths and uphold the values of individual liberty. Always ensure that personal beliefs are not expressed in ways which exploit pupils' vulnerability or might lead them to break the law. (Please familiarise yourself with the schools' Prevent policy)

Adults should not swear or use sexist, sexual, racist, homophobic, transphobic or discriminatory language at, or in the presence of students. Staff should not demonstrate favouritism towards any one student or group of students. Adults should be polite and use respectful language in the presence of students. Do not use language to humiliate or undermine a student. Avoid the use of sarcasm or irony which can be misunderstood by a student. We expect students to be similarly respectful and polite to adults.

Adults must take due care when accepting gifts and hospitality from students, parents/guardians or prospective students as acceptance of such gifts can be misunderstood and misinterpreted.

All staff and visiting tutors must have proper and professional regard for the ethos, policies and practices of the school and maintain high standards in their own attendance, punctuality and personal appearance. Adults should dress appropriately and respectfully at all times whilst in school and in the studio this includes the use of logos on items of clothing. All staff and visitors must sign in on arrival and sign out whenever they leave the building even if they are to return a short while later. All visitors must wear a visitor badge whilst in the building. Whilst teaching, staff do not have to wear their badge but it must be on view and readily accessible if required. At Central School of Ballet all students and staff use first names when addressing one another.

Teachers must have an understanding of, and always act within, the statutory frameworks which set out their professional duties and responsibilities. Adults should not behave in a way that could be subject to misinterpretation, both physically and verbally.

Photography and Filming

No member of staff or visitor should use their own mobile phone or any other personal device to take photographs of or film Central School of Ballet students or any young people they may teach as part of their Central School of Ballet duties. Any footage taken on a Central School of Ballet device should not be used on personal websites or personal

social media sites nor copied to personal computers. No young person should be identified and named on such photographs and film footage.

Use of Mobile Phones in School

All adults must not make personal phone calls when in a class. All phones must be turned off or switched to silent. Personal phone calls should be made during breaks and out of earshot of students.

Social Media

It is not appropriate for staff or visiting tutors to have pupils or ex-pupils below the school leaving age of 18 years, as 'friends' on Facebook or any other social media site. Adults should not disclose personal phone numbers, email addresses and contact details to students. Staff Facebook profiles must be set to 'private'. Inflammatory comments about the school, students or individual members of staff should not be posted on any social media site. No pupil or staff name should be posted in any online social media without prior permission from the Executive Director of the school.

Please Note

Adults must only use the changing rooms and toilets for staff or visitors. Adults must not enter toilets or changing rooms designated for student use only. Please be aware that the ground floor visitor toilet should not be used as a changing room by staff or students.

Adults should not drink alcohol or smoke in front of students. Please refer to the school guidelines regarding the designated smoking area. Please be aware not to wear any item of clothing that can identify you as a member of Central School of Ballet whilst in the designated smoking area i.e a Central School of Ballet T-shirt or hooded top. Physical contact between a student and an adult should be kept to a minimum. *Please refer to Central's Appropriate Contact in Dance Policy.*

Please familiarise yourself with the school's Emergency Evacuation Route and Procedures. If a student is injured, please consult a first aid trained member of staff for guidance. All accidents must be recorded in the accident book.

As a rule, adults should avoid speaking to, or working with a student alone in a room with the door closed. If an adult needs to, or work with a student in confidence, then it is advisable that this meeting / interaction takes place in an environment visible to others and preferably with the door open. If this is not possible then adults should ensure an appropriate distance is maintained between the adult and student and ideally, notify your line manager before the meeting takes place. Please be aware that an adult should never promise for a disclosure by a student to remain a secret but that all disclosures are immediately reported to the school's Designated Safeguarding Lead.

Adults must not transport a student in their own car nor invite students to their home. Adults should not meet socially with students outside of school. In the case of an emergency where a student may need to be chaperoned home, public transport, or with prior permission, a taxi should be used. In the event of an emergency, the Executive Director or Artistic Director needs to be consulted.

Disclosures
All staff and visitors agree to report Disclosures to Central's Designated Safeguarding Lead: Debra Cougill, Head of Widening Participation & Access located in the office s on Level 1.
EM: debra.cougill@csbschool.co.uk DL: 020 7520 2066

I have read and understood the guidelines as written above.

Name of Staff Member / Guest Artist (PLEASE PRINT):

Name of Staff Member / Guest Artist (PLEASE SIGN):

Date:

Once signed this form should be returned to the member of staff who contracted you.

APPENDIX B

Central School of Ballet Code of Conduct for Visitors to Central School of Ballet who will be unaccompanied around the building

Central School of Ballet works with children, young people and vulnerable adults delivering programmes of education and classes. Central recognises that all children, young people and vulnerable adults involved in the work of the school have a right to protection and feel safe at all times. For the purpose of this policy a child is defined as a person under 18 and includes young people over 18 who are in full time education.

We ask all visitors to the school to comply with the clear guidelines as written below. Please note that failure to follow the school's safeguarding policy may result in termination of the contract between us.

Personal and Professional Conduct

All visitors are expected to demonstrate consistently high standards of personal and professional conduct. All students, irrespective of culture, disability, gender, language, racial origin, religious belief and/or sexual identity should be treated fairly and with dignity and mutual respect. Adults should not swear or use sexist, sexual, racist, homophobic, transphobic or discriminatory language at, or in the presence of students. We expect all visitors to Central to demonstrate tolerance of other faiths and uphold the values of individual liberty. Adults should be polite and use respectful language in the presence of students. Do not use language to humiliate or undermine a student. We expect students to be similarly respectful and polite to adults.

All adults must have proper and professional regard for the ethos, policies and practices of the school and maintain high standards in their own attendance, punctuality and personal appearance. Adults should dress appropriately and respectfully at all times.

Adults should not behave in a way that could be subject to misinterpretation, both physically and verbally.

Photography and Filming

No visitor should use their own mobile phone or any other personal device to take photographs of or film Central School of Ballet students.

Use of Mobile Phones in School

All visitors should refrain from making personal phone calls when in the building. All phones should be turned off or switched to silent. Personal phone calls should be made out of earshot of students. No personal mobile number should be given to young people.

Adults should not disclose personal phone numbers, email addresses and contact details to students.

Whilst in the Building:

Adults must only use the changing rooms and toilets designated for staff or visitors. Adults must not enter toilets or changing rooms designated for student use only.

Adults should not drink alcohol or smoke in front of students. Please ask a member of Reception staff regarding the designated smoking area.

Adults should avoid speaking to, or work in a room alone with a student.

Outside of the Building:

Adults must not transport a student in their own car nor invite students to their home.

**If you need any further clarification on these matters please refer to Central’s Designated Safeguarding Lead:
Debra Cougill, Head of Widening Participation & Access located in the offices on Level 1.
EM: debra.cougill@csbschool.co.uk DL: 020 7520 2066**

I have read and understood the guidelines as written above.

Name of Visitor (**PLEASE PRINT**):

Name of Visitor (**PLEASE SIGN**):

Company:

Date:

Once signed this form should be returned to the member of staff who contracted you.

**Central School of Ballet Child Protection & Safeguarding Policy
Incident Recording Form**

Please complete this form to ensure any disclosures, allegations of abuse or misconduct are correctly documented and pass to the Designated Safeguarding Lead.

Do not discuss this incident with anyone other than those who need to know.

Your name:
Your position:
Child's name:
Child's date of birth (if known)
Gender of Child:
Parents/carer names and address (if known):
Parent / Carer Contact Number:
Parent / Carer Email Address:
Have parents been contacted? YES / NO (if yes, what has been said)
Date, time and place of alleged incident:
Are you reporting your own concerns or those of somebody else? If so, who?

<p>Your observations: (continue on a separate sheet if necessary)</p>
<p>Record exactly what the child said in their own words and any questions you asked if the situation needed clarification: (Remember, do not lead the child – record actual details. Continue on separate sheet if necessary).</p>
<p>Were there any witnesses. If so, who?</p>
<p>Were there any people alleged to be involved. If so who?</p>
<p>Have any external agencies been contacted? YES / NO If Yes, who has been contacted? Include name; contact details, date and time and what advice was given.</p>
<p>Your Signature:</p> <p>Print Name:</p> <p>Date:</p>
<p>FOLLOW UP ACTION TO BE COMPLETED BY DSL: (include date and time of all correspondence / conversations)</p>

Please forward this form to Central’s Designated Safeguarding Lead immediately or within 24 hours.

Appendix D

Child Protection: Definitions & Indicators of Abuse & Neglect

Definitions

Child protection is part of the safeguarding agenda that focuses on preventing maltreatment and protecting children at risk of neglect or abuse. Under the Children Act 1989, Children's Safeguarding and Social Work have a legal duty to investigate and take any action to protect children where there are concerns that they are at risk of suffering significant harm which is defined as:

Neglect: failure to provide basic care to meet the child's physical needs, such as not providing adequate food, clothing or shelter; failure to protect the child from harm or ensure access to medical care and treatment.

Physical Abuse: causing physical harm or injury to a child. This may involve hitting, shaking, poisoning, burning or scalding, drowning or otherwise.

Sexual Abuse: touching the child inappropriately; involving children in sexual activity, or forcing them to witness sexual activity which includes involving children in looking at or the production of pornography.

Emotional Abuse: the persistent emotional maltreatment of a child which affects the child's emotional development; psychological ill treatment of a child through bullying, intimidation or threats.

Possible Indicators of Abuse and Neglect

Neglect	<ul style="list-style-type: none">• Inadequate or inappropriate clothing• Appears underweight and unwell and seems constantly hungry• Failure to thrive physically and appears tired and listless• Dirty or unhygienic appearance• Frequent unexplained absences from school• Lack of parental supervision
Physical Abuse	<ul style="list-style-type: none">• Any injury such as bruising, bite marks, burns or fractures where the explanation given is inconsistent with the injury• Injuries in unexpected places or that are not typical of normal childhood injuries or accidents• High frequency of injuries• Parents seem unconcerned or fail to seek adequate medical treatment
Sexual Abuse	<ul style="list-style-type: none">• Sexual knowledge or behaviour that is unusually explicit or inappropriate for the child's age / stage of development

	<ul style="list-style-type: none"> • Sexual risk taking behaviour including involvement in sexual exploitation / older boyfriend or girlfriend • Continual inappropriate or excessive masturbation • Physical symptoms such as injuries to genital or anal area or bruising, sexually transmitted infections, pregnancy • Unwillingness to undress for sports
Emotional Abuse	<ul style="list-style-type: none"> • Developmental delay • Attachment difficulties with parents and others • Withdrawal and low self-esteem
Indirect Indicators of Abuse & Neglect	<ul style="list-style-type: none"> • Sudden changes in behaviour • Withdrawal and low self-esteem • Eating disorders • Aggressive behaviour towards others • Sudden unexplained absences from school • Drug / alcohol misuse • Running away / going missing
Parental Attributes	<ul style="list-style-type: none"> • Misusing drugs and / or alcohol • Physical / mental health or learning difficulties • Domestic violence • Avoiding contact with school and other professionals

Appendix E

Specific Safeguarding Issues

Female Genital Mutilation (FGM)

The statutory guidance 'Keeping Children Safe in Education' published in April 2014, asks schools to ensure that they raise awareness of Female Genital Mutilation (FGM). All staff must be aware of FGM.

FGM occurs mainly in Africa and to a lesser extent, in the Middle East and Asia. Although it is believed by many to be a religious issue, it is a cultural practice. There are no health benefits.

Communities particularly affected by FGM in the UK include girls from: Somalia, Kenya, Ethiopia, Sierra Leone, Sudan, Egypt, Nigeria, Eritrea, Yemen, Indonesia and Afghanistan. In the UK, FGM tends to occur in areas with larger populations of communities who practise FGM, such as first generation immigrants, refugees and asylum seekers. These areas include: London, Cardiff, Manchester, Sheffield, Northampton, Birmingham, Oxford, Crawley, Reading, Slough and Milton Keynes.

In England and Wales, 23,000 girls under 15 could be at risk of FGM. FGM has been a criminal offence since 1985 and since 2003, it has been an offence to take girls abroad for mutilation. The penalty for such a crime can be up to 14 years in prison.

Peer on Peer Abuse

Peer on peer abuse occurs when a young person is exploited, bullied and/or harmed by their peers who are the same or similar age; everyone directly involved in peer on peer abuse is under the age of 18. 'Peer-on-peer' abuse can relate to various forms of abuse including bullying and cyberbullying; harmful sexual behaviour including sexting, sexual abuse, child sexual exploitation and gender based violence.

Radicalisation and Extremism

Protecting children from the risk of radicalisation should be seen as part of schools' and colleges' wider safeguarding duties, and is similar in nature to protecting children from other forms of harm and abuse.

During the process of radicalisation, it is possible to intervene to prevent vulnerable people being radicalised. Radicalisation refers to the process by which a person comes to support terrorism and forms of extremism. There is no single way of identifying an individual who is likely to be susceptible to an extremist ideology. It can happen in many different ways and settings. Specific background

factors may contribute to vulnerability, which are often, combined with specific influences such as family, friends or online, and with specific needs for which an extremist or terrorist group may appear to provide an answer. The internet and the use of social media in particular has become a major factor in the radicalisation of young people.

As with other safeguarding risks, staff should be alert to changes in children's behaviour, which could indicate that they may be in need of help or protection. Staff should use their judgement in identifying children who might be at risk of radicalisation and act proportionately, which may include making a referral to the Channel programme.

